

# INHALT · CONTENTS

Vorwort	VII
Preface	IX

## A. Präludien, Toccaten, Fantasien und Fugen II

Toccatà in C BWV 564	3
----------------------	---



Adagio



Fuga



Fantasia in C BWV 570	16
-----------------------	----



Fantasia in C (Fragment) BWV 573	18
----------------------------------	----



Fuga in c (über ein Thema von Legrenzi) BWV 574	19
---	----



Fuga in c BWV 575	26
-------------------	----



Toccatà con Fuga in d BWV 565	31
-------------------------------	----

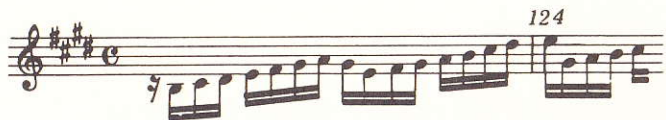
Adagio



Fuga



Praeludium et Fuga in E BWV 566 . . . . . 40



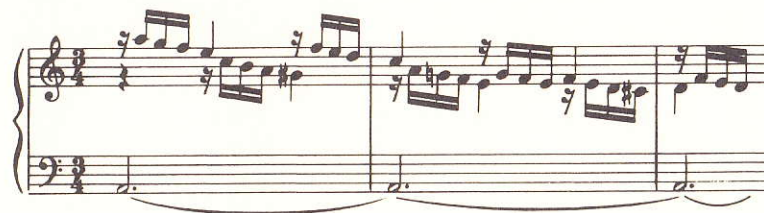
Praeludium in G BWV 568 . . . . . 51



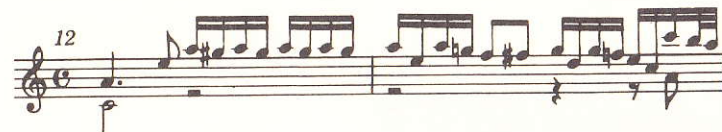
Fuga in g BWV 578 . . . . . 55



Praeludium in a BWV 569 . . . . . 59



Praeludium con Fuga in a BWV 551 . . . . . 63



Fantasia in h BWV 563 . . . . . 68



Fuga in h (über ein Thema von Corelli) BWV 579 . . . . .	71	Fuga in c (über ein Thema von Legrenzi) BWV 574b . . . . .	88
--	----	--	----

Musical score for Fuga in h (über ein Thema von Corelli) BWV 579. It consists of two staves: a treble clef staff and a bass clef staff. The key signature has one sharp (F#) and the time signature is common time (C). The piece begins with a whole rest in both staves, followed by a series of notes in the bass staff and a melodic line in the treble staff.

Musical score for Fuga in c (über ein Thema von Legrenzi) BWV 574b. It consists of a single treble clef staff. The key signature has two flats (Bb, Eb) and the time signature is common time (C). The piece starts with a whole rest, followed by a series of eighth and sixteenth notes.

Fuga in D BWV 532a . . . . .	95
------------------------------	----

Musical score for Fuga in D BWV 532a. It consists of a single treble clef staff. The key signature has two sharps (F#, C#) and the time signature is common time (C). The piece features a continuous stream of eighth notes in the right hand, with some rests and melodic fragments.

B. Frühfassungen und Varianten zu I (Band 5) und II (Band 6)

Praeludium et Fuga in C BWV 545a . . . . .	77	Praeludium (Fantasia) et Fuga in d BWV 549a . . . . .	101
--	----	---	-----

Musical score for Praeludium et Fuga in C BWV 545a. It consists of two staves: a treble clef staff and a bass clef staff. The key signature has no sharps or flats and the time signature is common time (C). The prelude is a complex piece with many sixteenth notes in both hands, while the fugue is a simple, slow-moving line in the bass staff.

Musical score for Praeludium (Fantasia) et Fuga in d BWV 549a. It consists of a single bass clef staff. The key signature has two flats (Bb, Eb) and the time signature is common time (C). The prelude is a complex piece with many sixteenth notes and ornaments in the bass staff, while the fugue is a simple, slow-moving line in the bass staff.

Musical score for Fuga (BWV 545a). It consists of a single treble clef staff. The key signature has no sharps or flats and the time signature is common time (C). The fugue is a simple, slow-moving line in the treble staff.

Musical score for Fuga (BWV 549a). It consists of a single bass clef staff. The key signature has two flats (Bb, Eb) and the time signature is common time (C). The fugue is a simple, slow-moving line in the bass staff.

Fuga in c (über ein Thema von Legrenzi) BWV 574a . . . . .	82
--	----

Musical score for Fuga in c (über ein Thema von Legrenzi) BWV 574a. It consists of a single treble clef staff. The key signature has two flats (Bb, Eb) and the time signature is common time (C). The piece starts with a whole rest, followed by a series of eighth and sixteenth notes.

Praeludium et Fuga in e BWV 533a . . . . .	106
--	-----

Musical score for Praeludium et Fuga in e BWV 533a. It consists of two staves: a treble clef staff and a bass clef staff. The key signature has one sharp (F#) and the time signature is common time (C). The prelude is a complex piece with many sixteenth notes in both hands, while the fugue is a simple, slow-moving line in the bass staff.

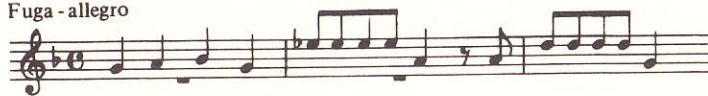
Musical score for Fuga (BWV 533a). It consists of a single bass clef staff. The key signature has one sharp (F#) and the time signature is common time (C). The fugue is a simple, slow-moving line in the bass staff.

Praeludium et Fuga in g (Fragment) BWV 535a . . . . . 109

Passaggio



Fuga - allegro



Praeludium et Fuga in A BWV 536a . . . . . 114



Fuga



Praeludium et Fuga in a BWV 543a . . . . . 121

Praeludium

